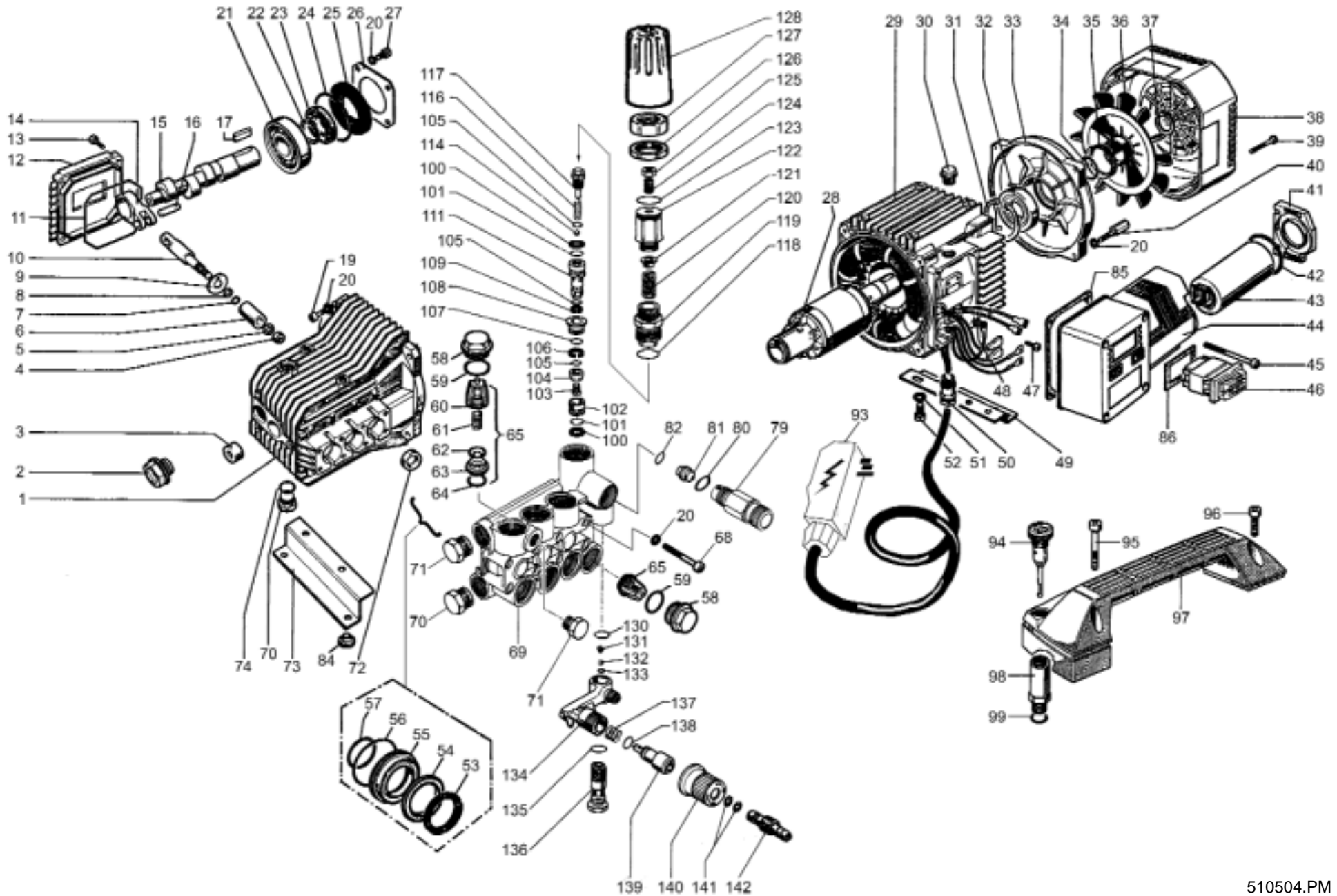


Pump/Motor Series (1.5 - 2.0 HP)

This pump uses 30 wt. oil



PARTS LIST

| Item | Code | Description | Kit | Qty | Item | Code | Description | Kit | Qty | Item | Code | Description | Kit | Qty |
|------|----------|------------------|--------|-----|-----------------|----------|-----------------------|--------|-----|--------------------|----------|----------------------|------|-----|
| 1 | N/A | Crankcase | | 1 | 47 | 99151500 | Ground screw | | 1 | 104 | N/A | Spherical Valve | K102 | 1 |
| 2 | 97596800 | Sightglass | | 1 | 48 | 96691300 | Ground washer | | 1 | 105 | N/A | O-ring | K102 | 3 |
| 3 | N/A | Needle Bearing | | 1 | 49 | 51200374 | Back foot | | 1 | 106 | N/A | Anti-Ext ring | K102 | 1 |
| 4 | 92221600 | Nut M8, SS | | 3 | 50 | 93521000 | Strain relief | | 1 | 107 | N/A | O-ring | K102 | 1 |
| 5 | 96700800 | Washer | | 3 | 51 | 96701400 | Washer | | 4 | 108 | N/A | Guide | K102 | 1 |
| 6 | 51040009 | Plunger, 15mm | | 3 | 52 | 99303700 | Screw M8 x 16 | | 4 | 109 | N/A | Anti-Ext ring | K102 | 1 |
| 7 | 90357200 | O-ring | | 3 | 53 | N/A | Head ring, 15mm | K97 | 3 | 111 | N/A | Piston | K102 | 1 |
| 8 | 90502200 | Anti-ext ring | | 3 | 54 | N/A | HP Seal, 15mm | K97 | 3 | 114 | N/A | Ball | K102 | 1 |
| 9 | 96707000 | Flinger washer | | 3 | 55 | 51080070 | Intermediate ring, | | 3 | 116 | N/A | Spring | K102 | 1 |
| 10 | N/A | Piston guide | | 3 | 56 | N/A | O-ring | K97 | 3 | 117 | N/A | Stem | K102 | 1 |
| 11 | N/A | O-ring | 100884 | 1 | 57 | N/A | LP Seal ring, | K97 | 3 | 118 | N/A | O-ring | K102 | 1 |
| 12 | 51160022 | Crankcase cover | | 1 | 58 | 98221800 | Valve cap | | 6 | 119 | N/A | Guide | K102 | 1 |
| 13 | 99186700 | Screw M6 x 18 | | 4 | 59 | 90384700 | O-ring | | 6 | 120 | 94743600 | Spring | | 1 |
| 14 | N/A | Connecting rod | | 3 | 60 | N/A | Valve cage | K01 | 6 | 121 | 36316970 | Spring plate | | 1 |
| 15 | N/A | Crankshaft | | 1 | 61 | N/A | Valve spring | K01 | 6 | 122 | 36318570 | Regulator knob | | 1 |
| 16 | N/A | Wrist pin | | 3 | 62 | N/A | Valve poppet | K01 | 6 | 123 | 90359800 | O-ring | | 1 |
| 17 | N/A | Key | | 1 | 63 | N/A | Valve seat | K01 | 6 | 124 | 99305400 | Set screw, M8 | | 1 |
| 19 | N/A | Screw M6 x 25 | | 4 | 64 | N/A | O-ring | K01 | 6 | 125 | 92221800 | Nut, M8 | | 1 |
| 20 | N/A | Washer | | 20 | 65 | N/A | Valve assy. | K01 | 6 | 126 | 92293500 | Lock nut | | 1 |
| 21 | N/A | Bearing | | 1 | 68 | 99194300 | Headbolt M6 x 40 | | 8 | 127 | 36318670 | Lock sleeve | | 1 |
| 22 | N/A | Clip | | 1 | 69 | 51120141 | Manifold, (Brass) | | 1 | 128 | 36322151 | Handle | | 1 |
| 23 | N/A | Seal | 100884 | 1 | | 55120122 | Manifold, (Alum) | | 1 | Injector | | | | |
| 24 | N/A | O-ring | 100884 | 1 | 70 | 98210000 | 3/8 Plug | | 2 | 130 | N/A | O-ring | K94 | 1 |
| 25 | N/A | Spacer | | 1 | 71 | 98204100 | Plug 1/4 | | 2 | 131 | N/A | Conical spring | K94 | 1 |
| 26 | N/A | Plate | | 1 | 72 | N/A | Oil seal | 100884 | 3 | 132 | N/A | Ball | K94 | 1 |
| 27 | N/A | Screw | | 4 | 73 | 51200274 | Front foot | | 1 | 133 | N/A | O-ring | K94 | 1 |
| 28 | N/A | Rotor | | 1 | 74 | 90383300 | O-ring | 100884 | 1 | 134 | 36318151 | Adj Injector | | 1 |
| 29 | N/A | Stator | | 1 | 79 | 10014770 | Disch nipple | | 1 | 135 | N/A | O-ring | K94 | 1 |
| 30 | 98209300 | Plug | | 1 | 80 | N/A | O-ring | K94 | 1 | 136 | 36256370 | Banjo bolt, Injector | | 1 |
| 31 | N/A | Clip | | 1 | 81 | 10015166 | Nozzle 2.0mm | | 1 | 137 | N/A | Spring | K94 | 1 |
| 32 | N/A | Bearing | | 1 | 82 | N/A | O-ring, nozzle | K94 | 1 | 138 | 90358000 | O-ring | K94 | 1 |
| 33 | N/A | Back cover | | 1 | 84 | 98192400 | Pad | | 4 | 139 | 36256470 | Shutter | | 1 |
| 34 | 90385700 | O-ring | | 1 | 85 | 41210147 | Electrical box gasket | | 1 | 140 | 36256551 | Knob | | 1 |
| 35 | 90165200 | Tensioner | | 1 | 86 | 41212684 | Switch gasket | | 1 | 141 | 90357000 | O-ring | K94 | 2 |
| 36 | 41030051 | Fan | | 1 | 93 | 526605 | GFCI | | 1 | 142 | 36256670 | Hose barb | | 1 |
| 37 | 90062800 | Clip | | 1 | 94 | 98209700 | Dipstick, w/ Handle | | 1 | REPAIR KITS | | | | |
| 38 | 41040051 | Fan cover | | 1 | | 98210300 | Dipstick, w/o Handle | | 1 | | | | | |
| 39 | 99165800 | Screw M5 x 45 | | 4 | 95 | 99314400 | Screw M8 x 50 | | 2 | | | | | |
| 40 | 41210465 | Stud screw M5 | | 4 | 96 | 99306900 | Screw M8 x 25 | | 2 | | | | | |
| 41 | 41212051 | Capacitor cover | | 1 | 97 | 51240051 | Handle | | 1 | | | | | |
| 42 | 90388500 | O-ring | | 1 | 98 | 51210051 | Dipstick tube | | 1 | | | | | |
| 43 | 93599400 | Capacitor 2hp | | 1 | 99 | 90383300 | O-ring | | 1 | | | | | |
| | 93568800 | Capacitor 1.5hp | | 1 | Unloader | | | | | | | | | |
| 44 | 41212451 | Electrical cover | | 1 | 100 | N/A | Anti-Ext ring | K102 | 2 | | | | | |
| 45 | 99170500 | Screw M5 x 65 | | 4 | 101 | N/A | O-ring | K102 | 2 | | | | | |
| 46 | 93507000 | Switch 2hp | | 1 | 102 | N/A | Seat | K102 | 1 | | | | | |
| | 93503100 | Switch 1.5hp | | 1 | 103 | N/A | Screw | K102 | 1 | | | | | |

| Kit No. | K01 | K97 | K100884 | K102 | K94 |
|-----------------------------|--------------------|--------------|-----------------|--|-----------------------------------|
| Item No.s included in kit | 60,61,62, 63,64,65 | 53,54, 56,57 | 11,23,24, 72,74 | 100,101,102,103, 104,105,106,107, 108,109,111,114, 116,117,118,119 | 130,131,132, 133,135,137, 138,141 |
| Number of assemblies in kit | 6 | 3 | | | |
| Description | Valve kit | Seal kit | Oil seal kit | Unloader kit | Injector kit |