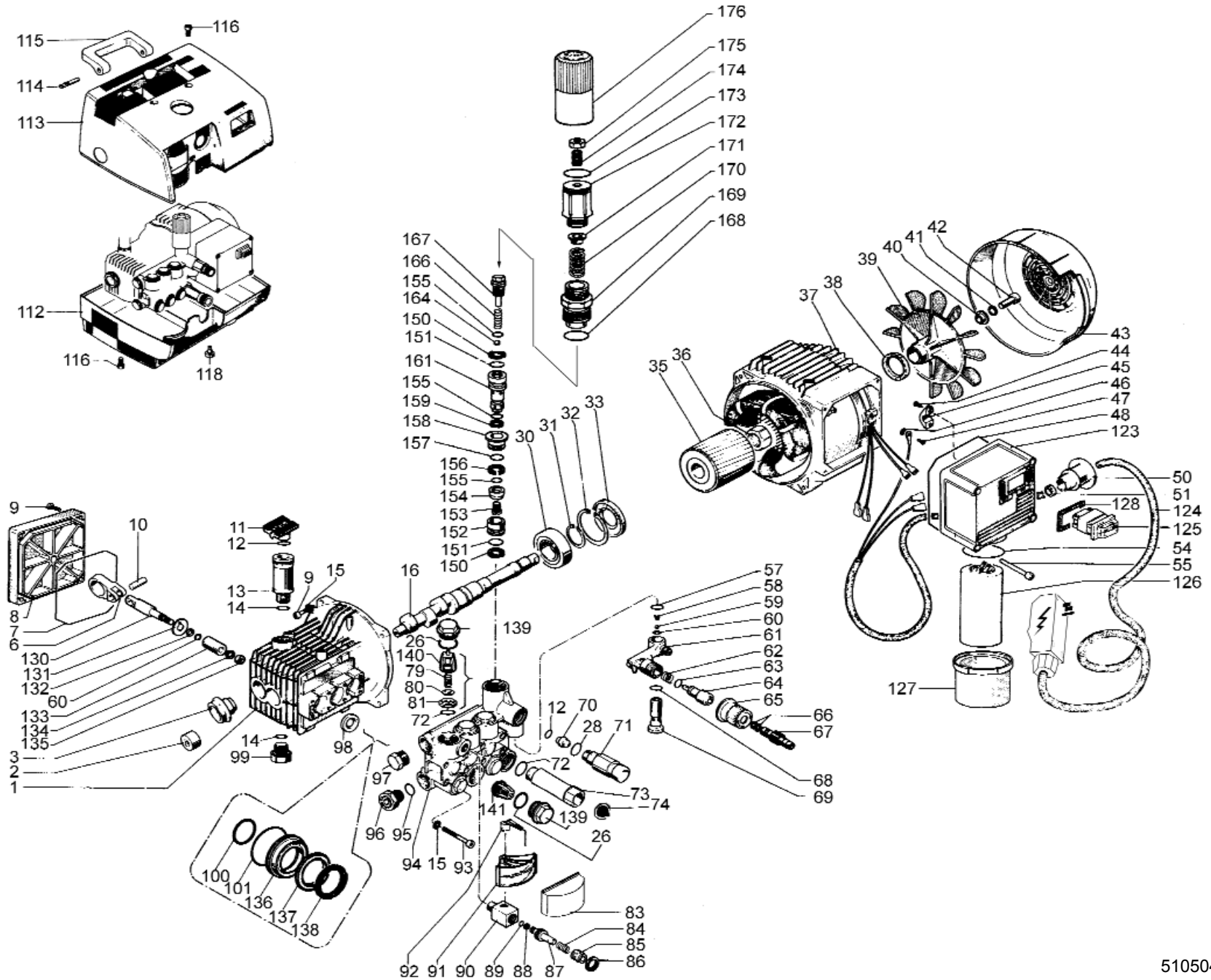


Pump/Motor Series (1000A)

This pump uses 30 wt. oil



PARTS LIST

Item	Code	Description	Kit	Qty	Item	Code	Description	Kit	Qty	Item	Code	Description	Kit	Qty
1	N/A	Crankcase		1	66	90357000	O-ring	K94	2	134	96700800	Washer		3
2	N/A	Needle Bearing		1	67	36256670	Hose barb		1	135	92221600	Nut, M8		3
3	97596800	Sightglass		1	68	N/A	O-ring	K94	1	136	51080070	Intermediate ring, 15mm		3
6	N/A	Connecting rod		3	69	36256370	Banjo bolt, Injector		1	137	N/A	HP Seal, 15mm	K87	3
7	90391700	O-ring		1	70	10030751	Nozzle		1	138	N/A	Head Ring, 15mm	K87	3
8	55160051	Crankcase cover		1	71	10014770	Disharge Nipple M22		1	139	98221800	Valve cap		6
9	99189700	Screw M6 x 25		8	72	90384100	O-ring	K01	7	140	N/A	Valve cage	K01	6
10	N/A	Wrist pin		3	73	680006	Inlet fitting, brass		1	141	N/A	Valve Assy, comple	K01	6
11	55211051	Vented Oil Cap		1	74	509915	Inlet filter, conical		1	150	N/A	Anti-Ext ring	K102	2
12	90382200	O-ring	K94	2	79	N/A	Valve spring	K01	6	151	N/A	O-ring	K102	2
13	55210051	Dipstick tube		1	80	N/A	Valve poppet	K01	6	152	N/A	Seat	K102	1
14	90383300	O-ring		2	81	N/A	Valve seat	K01	6	153	N/A	Screw	K102	1
15	N/A	Washer		12	83	10041551	Gauge cover		1	154	N/A	Sperical Valve	K102	1
16	N/A	Crankshaft		1	84	94733800	Spring		1	155	N/A	O-ring	K102	3
26	90384700	O-ring		6	85	36258070	Plug		1	156	N/A	Anti-Ext ring	K102	1
28	90383200	O-ring	K94	1	86	92249200	Nut M14		1	157	N/A	O-ring	K102	1
30	N/A	Bearing		1	87	36258970	Piston		1	158	N/A	Guide	K102	1
31	N/A	Clip		1	88	90500400	Anti-Ext ring		1	159	N/A	Anti-Ext ring	K102	1
32	N/A	Clip		1	89	90356700	O-ring		1	161	N/A	Piston	K102	1
33	90165000	Seal		1	90	10043870	Gauge body		1	164	N/A	Ball	K102	1
35	N/A	Rotor 115 Volt		1	91	10043901	Scale		1	166	N/A	Spring	K102	1
36	N/A	Nut M22		1	92	10041901	Needle		1	167	N/A	Stem	K102	1
37	N/A	Stator 115 Volt		1	93	99194300	Headbolt M6 x 40		8	168	N/A	O-ring	K102	1
38	90163200	Ring		1	94	55120122	Manifold, Aluminum, Nickle		1	169	N/A	Guide	K102	1
39	45030051	Fan		1	95	90359100	O-ring		1	170	94743600	Spring		1
40	45212570	Bushing		1	96	98209000	Plug 3/8"		1	171	36316970	Spring plate		1
41	96701400	Washer		1	97	98210000	Plug 3/8"		1	172	36318570	Regulator knob		1
42	99305900	Screw		1	98	N/A	Seal, plunger guide	K83	3	173	90359800	O-ring		1
43	45040051	Fan cover		1	99	98209100	Plug 3/8"		1	174	99305400	Set screw, M8		1
44	N/A	Screw		2	100	N/A	LP Seal ring, 15mm	K87	3	175	92221800	Nut, M8		1
45	N/A	Clamp, wire		1	101	N/A	O-ring	K87	3	176	36318751	Handle, red		1
46	N/A	Washer, grounding		1	112	55231251	Bottom cover, black		1					
47	N/A	Screw, grounding		1	113	55231351	Top cover, red		1					
48	90392000	O-ring		1	114	55240451	Pin		2					
50	N/A	Strain relief		1	115	55241851	Handle		1					
51	N/A	Gasket		1	116	99303900	Screw		8					
54	90388900	O-ring		1	118	98192400	Rubber foot		4					
55	N/A	Screw		1	123	45212451	Electrical Box		1					
57	N/A	O-ring	K94	1	124	526605	GFCI PLUG		1					
58	N/A	Conical Spring	K94	1	125	93502800	Switch		1					
59	N/A	Ball	K94	1	126	93568800	Capacitor, 115 Volt		1					
60	90357200	O-ring	K94	4	127	45212051	Cover, capacitor		1					
61	36318151	Adj Injector		1	128	41212684	Gasket, switch		1					
62	N/A	Spring	K94	1	130	N/A	Piston guide		3					
63	90358000	O-ring	K94	1	131	96707000	Flinger washer		3					
64	36256470	Shutter		1	132	90502200	Anti-Ext ring		3					
65	36256551	Knob		1	133	51040009	Piston, 15mm		3					

REPAIR KITS

Kit No.	K01	K87	K83	K102	K94
Item No.s included in kit	72,79, 80,81, 140,141	100,101 137,138	98	150,151,152,153, 154,155,156,157, 158,159,161,164, 166,167,168,169	12,28,57,58, 59,60,62,63, 66,68
Number of assemblies in kit	6	3	3	-	-
Description	Valve kit	Seal kit	Oil seal kit	Unloader kit	Injector kit