

Electric Motor or Gas Engine must be purchased separately.

Triplex Direct Drive Plunger Pump

Model

2SF

PUMP FEATURES

- UNIFLOW design provides continuous liquid flow forward through the pump, reduces cavitation risk and increases pump life.
- Triplex design with unique spring loaded inlet valves and the flow through ceramic plungers provides a smooth, steady flow.
- Ultimate portability—less than 11 pounds—less than 10" long.
- Standard shaft pump for direct mounting or special SOLID SHAFT and LOW RPM models.
- Regulating Unloader is standard on each pump to assure system pressure control and pump protection.
- Special Hi-Temp seal option for pumping 190°F water.
- Optional Thermo Valve mounts directly into by-pass hose for optimum heat protection while in by-pass.

COMMON PUMP SPECIFICATIONS

| | | |
|--------------------------------------|---------------------|-----------------------|
| Inlet Pressure Range.....(Standard) | Flooded to 75 PSI | (Flooded to 5.25 BAR) |
|(Hi-Temp) | 30 to 75 PSI | (2.1 to 5.25 BAR) |
| Bore..... | 0.708" | (18 mm) |
| Max. Liquid Temperature...(Standard) | 160°F | (71°C) |
|(Hi-Temp) | 190°F | (88°C) |
| Crankcase Capacity..... | 11.83 oz. | (.35 L) |
| Inlet Ports (1)..... | 3/8" NPTF | (3/8" NPTF) |
| Discharge Ports (2)..... | 3/8" NPTF | (3/8" NPTF) |
| By-Pass Ports (1)..... | 1/4" NPTF | (1/4" NPTF) |
| Weight (Pump Only)..... | 10.6 lbs. | (4.8 kg) |
| Dimensions (Pump Only)..... | 9.13 x 6.65 x 6.50" | (232 x 169 x 165mm) |

Refer to pump Service Manual for important Inlet Condition Check-List, Start-up Procedure, Tech Bulletins and Pump Maintenance information.

SPECIFICATIONS

| | U.S. Measure | Metric Measure | U.S. Measure | Metric Measure |
|------------------------------|-----------------|-------------------|-----------------|-------------------|
| MODEL | | | 2SF10ES | |
| Flow..... | | | 1.0 GPM | (3.8 L/M) |
| Max. Discharge Pressure..... | | | 2000 PSI | (140 BAR) |
| Max. RPM..... | | | 3450 RPM | (3450 RPM) |
| Stroke..... | | | 0.067" | (1.7 mm) |

| | | |
|------------------------------|---------------------|---------------------|
| MODEL | 2SF20ES | 2SF22ES |
| Flow..... | 2.0 GPM (7.6 L/M) | 2.2 GPM (8.3 L/M) |
| Max. Discharge Pressure..... | 2000 PSI (140 BAR) | 2000 PSI (140 BAR) |
| Max. RPM..... | 3450 RPM (3450 RPM) | 3450 RPM (3450 RPM) |
| Stroke..... | 0.122" (3.1 mm) | 0.132" (3.35 mm) |

| | |
|------------------------------|----------------------------|
| MODEL | 2SF22ELS |
| Flow..... | 2.2 GPM (8.3 L/M) |
| Max. Discharge Pressure..... | 2000 PSI (140 BAR) |
| Max. RPM..... | 1725 RPM (1725 RPM) |
| Stroke..... | 0.248" (6.3 mm) |

| | |
|------------------------------|----------------------------|
| MODEL | 2SF22SLS |
| Flow..... | 2.2 GPM (8.3 L/M) |
| Max. Discharge Pressure..... | 2000 PSI (140 BAR) |
| Max. RPM..... | 1725 RPM (1725 RPM) |
| Stroke..... | 0.248" (6.3 mm) |

| | | |
|------------------------------|----------------------------|---------------------|
| MODEL | 2SF29ELS | 2SF30ES |
| Flow..... | 2.85 GPM (10.8 L/M) | 3.0 GPM (11.4 L/M) |
| Max. Discharge Pressure..... | 1500 PSI (105 BAR) | 1500 PSI (105 BAR) |
| Max. RPM..... | 1725 RPM (1725 RPM) | 3450 RPM (3450 RPM) |
| Stroke..... | 0.335" (8.5 mm) | 0.177" (4.5 mm) |

| | |
|------------------------------|---------------------------|
| MODEL | 2SF30GS |
| Flow..... | 3.0 GPM (11.4 L/M) |
| Max. Discharge Pressure..... | 2000 PSI (140 BAR) |
| Max. RPM..... | 3450 RPM (3450 RPM) |
| Stroke..... | 0.185" (4.7 mm) |

| | | |
|------------------------------|---------------------|---------------------------|
| MODEL | 2SF35ES | 2SF35GS |
| Flow..... | 3.5 GPM (13.2 L/M) | 3.5 GPM (13.2 L/M) |
| Max. Discharge Pressure..... | 1500 PSI (105 BAR) | 2000 PSI (140 BAR) |
| Max. RPM..... | 3450 RPM (3450 RPM) | 3450 RPM (3450 RPM) |
| Stroke..... | 0.220" (5.6 mm) | 0.220" (5.6 mm) |

Optional Electric-3/4" Shaft - 2SF30GES, 2SF35GES

ES, ELS = **Electric 5/8"** hollow shaft with bolt mount, GES = **Electric 3/4"** hollow shaft with bolt mount, GS = **Gas 3/4"** hollow shaft with bolt and adapter mount, SLS = **Electric 3/4"** solid shaft complete with bracket mount. Add "3" to PN for Hi-Temp version.

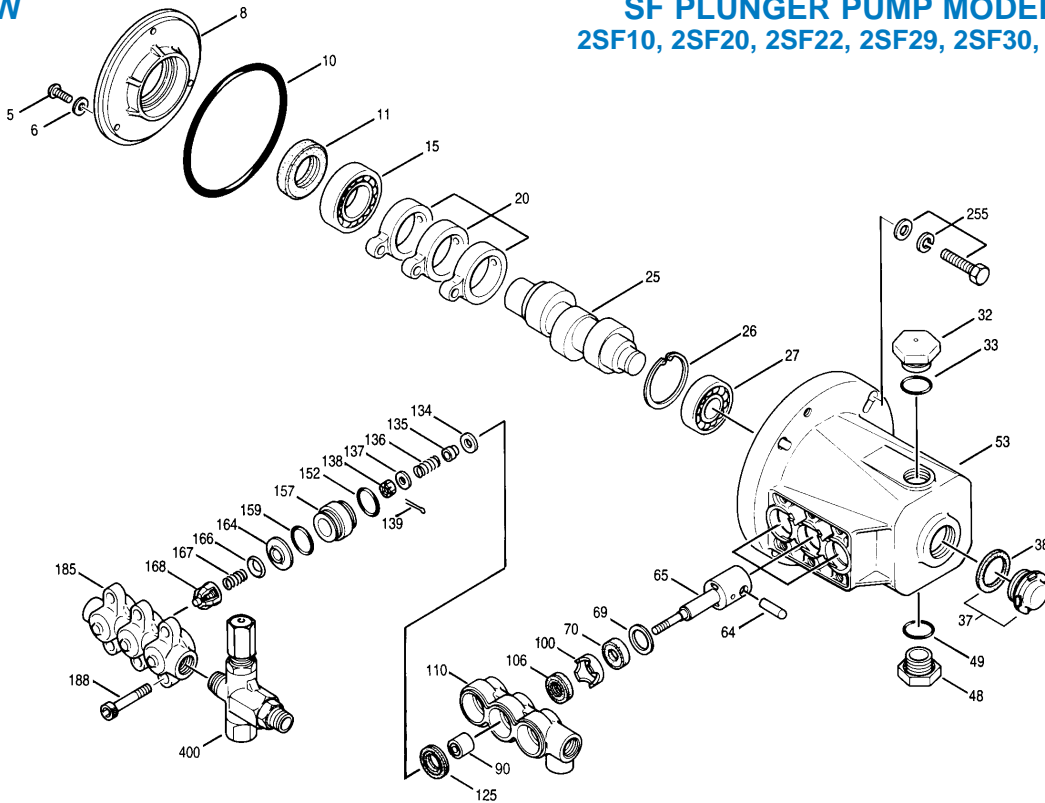
"Customer confidence is our greatest asset"

EXPLODED VIEW

October 2000

SF PLUNGER PUMP MODELS

2SF10, 2SF20, 2SF22, 2SF29, 2SF30, 2SF35



PARTS LIST

| ITEM | P/N | MATL | DESCRIPTION | MODEL USED | QTY | ITEM | P/N | MATL | DESCRIPTION | MODEL USED | QTY |
|------|--------|------|--|-------------------------|-----|-------|--------|--|---|-------------------------|-----|
| 5 | 89551 | STZP | Screw, HHC (M6 x 16) | All Models | 3 | 135 | 44871 | S | Spacer, Inlet | All Models | 3 |
| 6 | 150810 | NBR | Washer, Seal (M6) | All Models | 3 | 136 | 44872 | S | Spring, Inlet Valve | All Models | 3 |
| 8 | 44857 | AL | Cover, Bearing, Inner | All Models | 1 | 137 | 88575 | S | Washer, Conical (M6) | All Models | 3 |
| 10 | 14044 | NBR | O-Ring, Bearing Cover | All Models | 1 | 138 | 27000 | S | Nut, Slotted (M6) | All Models | 3 |
| 11 | 44859 | NBR | Seal, Oil | All Models | 1 | 139 | 14158 | S | Cotterpin | All Models | 3 |
| 15 | 14488 | STL | Bearing, Ball, Inner | All Models | 1 | 152 | 26089 | NBR | O-Ring, Adapter, Inner - 80D | All Models | 3 |
| 20 | 45876 | HS | Rod, Connecting | All Models | 3 | 11377 | FPM | O-Ring, Adapter, Inner - 80D | All Models | 3 | |
| 25 | 543135 | FCM | Crankshaft, 3450 RPM, 5/8", 1.7mm | 10ES | 1 | 157 | 44878 | BB | Discharge Valve Adapter | All Models except 29ELS | 3 |
| | 45092 | FCM | Crankshaft, 3450 RPM, 5/8", 3.1mm | 20ES | 1 | 45430 | BB | Discharge Valve Adapter | 29ELS | 3 | |
| | 44933 | FCM | Crankshaft, 3450 RPM, 3/4", 3.35mm | 22GS | 1 | 159 | 26089 | NBR | O-Ring, Adapter, Outer - 80D | All Models | 3 |
| | 44929 | FCM | Crankshaft, 3450 RPM, 5/8", 3.35mm | 22ES | 1 | 11377 | FPM | O-Ring, Adapter, Inner - 80D | All Models | 3 | |
| | 542441 | FCM | Crankshaft, 3450 RPM, 3/4", 4.7mm | 30GS | 1 | 164 | 44881 | S | Seat | All Models | 3 |
| | 44931 | FCM | Crankshaft, 3450 RPM, 5/8", 4.5mm | 30ES | 1 | 166 | 43723 | S | Valve | All Models | 3 |
| | 45096 | FCM | Crankshaft, 3450 RPM, 5/8", 5.6mm | 35ES | 1 | 167 | 541062 | S | Spring | All Models | 3 |
| | 45100 | FCM | Crankshaft, 3450 RPM, 3/4", 5.6mm | 35GS | 1 | 168 | 44565 | PVDF | Retainer, Spring | All Models | 3 |
| | 45160 | FCM | Crankshaft, 1725 RPM, 5/8", 6.3mm | 22ELS | 1 | 185 | 44879 | BB | Manifold, Discharge | All Models | 1 |
| | 45426 | FCM | Crankshaft, 1725 RPM, 5/8", 8.5mm | 29ELS | 1 | 188 | 87859 | STZP | Screw, HSH (M8x75) | All Models | 6 |
| | 45146 | FCM | Crankshaft, 1725 RPM, Solid, 3/4", 6.3mm | 22SLS | 1 | 249 | 30968 | | Kit, Adapter Mount, Gas | 30G, 35G | 1 |
| 26 | 12385 | STL | Ring, Retaining | All Models | 1 | 15845 | STZP | Lockwasher, Split (M8) | | 4 | |
| 27 | 15710 | STL | Bearing, Ball, Outer | All Models | 1 | 44843 | STZP | Screw, HH (5/16-24) | | 4 | |
| 32 | 45690 | RTP | Cap, Oil Filler | All Models | 1 | 44942 | AL | Flange | | 1 | |
| 33 | 14179 | NBR | O-Ring, Oil Filler Cap - 70D | All Models | 2 | 12489 | STZP | Washer, Flat (M8) | | 4 | |
| 37 | 92241 | | Gauge, Bubble Oil w/Gasket - 80D | All Models | 1 | 255 | 30517 | STZP | Kit, Bolt Mount | All Models | 1 |
| 38 | 44428 | NBR | Gasket, Flat Flex., Oil Gauge - 80D | All Models | 1 | 30980 | STZP | Washer, Flat (3/8") | | 4 | |
| 48 | 44842 | NY | Plug, Drain (1/2" NPT) | All Models | 1 | 30921 | STZP | Lockwasher, Split (3/8") | | 4 | |
| 49 | 14179 | NBR | O-Ring, Drain Plug - 70D | All Models | 1 | 34100 | STZP | Screw, HH (3/8"-16 x 1-3/8") | | 4 | |
| 53 | 45702 | AL | Crankcase | All Models | 1 | 6106 | | Lubricant, Antiseize | | 1 | |
| 64 | 16948 | CM | Pin, Crosshead | All Models | 3 | 30050 | STL | Key (3/16" x 3/16" x 1-1/4" HD) | | 1 | |
| 65 | 44865 | SZZ | Rod, Plunger | All Models except 29ELS | 3 | 259 | 30973 | STZP | Kit, Mounting Bracket (Incl. w/Pump) | 22SL | 1 |
| | 45427 | SZZ | Rod, Plunger | 29ELS | 3 | | | (Inclds: Bracket, Washers, Bolts, Nuts) | | | |
| 69 | 20017 | STZP | Washer (M24) | All Models | 3 | 285 | 80228 | STL | Screw (M8-1.25x80) | All Models | 1 |
| 70 | 25461 | NBR | Seal, Oil | All Models | 3 | 300 | 34053 | NBR | Kit, Seal (Inclds: 106, 125, 139, 152, 159) | All Models | 1 |
| 90 | 45847 | CC | Plunger (M18x14) | All Models except 29ELS | 3 | 33953 | HT | Kit, Seal - Hi-Temp (Inclds: 106, 125, 134, 139, 152, 159) | All Models | 1 | |
| | 45429 | CC | Plunger (M18x16) | 29ELS | 3 | 33453 | FPM | Kit, Seal (Inclds: 106, 125, 139, 152, 159) | All Models | 1 | |
| 100 | 44869 | PVDF | Retainer, Seal | All Models | 3 | 310 | 34052 | NBR | Kit, Valve (Inclds: 152, 159, 164, 166, 167, 168) | All Models | 1 |
| 106 | 44876 | NBR | Seal, LPS w/S-Spg | All Models | 3 | 311 | 34668 | NBR | Kit, Inlet Valve (Inclds: 134-137, 139, 152, 159) | All Models | 1 |
| | 545192 | FPM | Seal, LPS w/S-Spg | All Models | 3 | 352 | 44050 | STZP | Tool, Oil Gauge Removal | All Models | 1 |
| 110 | 44874 | BB | Manifold, Inlet | All Models | 1 | 400 | 75005 | BB | Unloader, Regulating | All Models | 1 |
| 125 | 43245 | SNG | Seal, HPS w/S | All Models | 3 | — | 34455 | | Assembly, Pulsator | All Models | 1 |
| | 46652 | HT | Seal, Hi-Temp (190° Max) | All Models | 3 | — | 6565.8 | | Service Video, Section 8 | All Models | 1 |
| 134 | 45854 | S | Valve, Inlet | All Models | 3 | | | | | | |
| | 33873 | NY | Valve, Inlet, Hi-Temp | All Models | 3 | | | | | | |

● Industrial discount. **Bold print part numbers are unique to a particular pump model.** *Italics are optional items.*

See Tech Bulletins 02, 24, 36, 43, 55, 60, 64, 65, 70, 73, 74 and 83 for additional information.

NOTE: Discard Key which may come standard with most motors and engines and **use only the key included in this kit.** Add "3" to Part Number for special 190°F Hi-Temp seals.

MATERIAL CODES (Not Part of Part Number): AL=Aluminum BB=Brass CC=Ceramic CM=Chrome-Moly FCM=Forged Chrome-moly FPM=Fluorocarbon (Viton®)

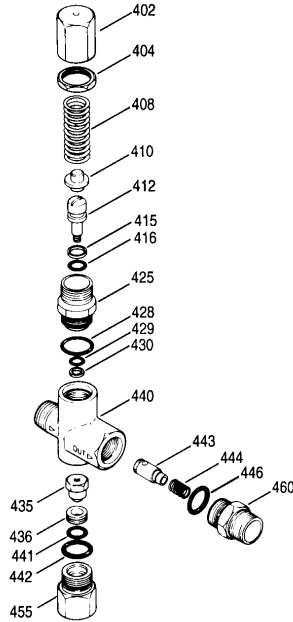
HS=High Strength HT=Hi-Temp (EPDM Alternative) NBR=Medium Nitrile (Buna-N) NY=Nylon PVDF=Fluoroplastic (High Strength) RTP=Reinforced Composite

S=304SS STL=Steel STZP=Steel/Zinc Plated SZZ=304SS/Zamak ZZ=Zamak

Center raised pilot guide on the **Adapter Plate** assures proper alignment of pump and engine. Before mounting pump onto engine inspect engine for **recessed seal and bearing guide** to permit adapter to completely seat into recess and four bosses to be flush with engine face.

UNLOADER SPECIFICATIONS

| MODEL 7500S | U.S. Measure | Metric Measure |
|------------------------------|-------------------|--------------------|
| GPM | 0.5-6.0 GPM | (2-23 L/M) |
| PSI | 100-2000 PSI | (7-140 BAR) |
| Inlet Port - Rear | 3/8" NPTF | (3/8" NPTF) |
| Discharge Port - Front | M18 x 1.0 | (M18 x 1.0) |
| By-pass Port - Bottom | 3/8" NPTF | (3/8" NPTF) |
| Weight | 14 oz. | (0.43 kg) |
| Dimensions | 3.0 x 1.0 x 4.25" | (76 x 25 x 108 mm) |



| ITEM | P/N | MATL | DESCRIPTION | QTY. |
|------|---------|------|---|------|
| 402 | 540081 | BB | Cap, Hex Adjusting | 1 |
| 404 | 31047 | BB | Nut, Locking (M18x1) | 1 |
| 408 | 32094 | STZP | Spring, Coil | 1 |
| 410 | 107672 | BB | Retainer, Spring | 1 |
| 412 | 45694 | S | Stem, Piston (M5) | 1 |
| 415 | 20184 | PTFE | Back-up-Ring, Piston Stem | 1 |
| 416 | 14190 | NBR | O-Ring, Piston Stem - 70D | 1 |
| 425 | 107673 | BB | Retainer, Piston | 1 |
| 428 | 13969 | NBR | O-Ring, Piston Retainer - 70D | 1 |
| 429 | 14759 | NBR | O-Ring, Body | 1 |
| 430 | 107675 | PTFE | Back-up-Ring, Body | 1 |
| 435 | 45696 | BB | Valve and Ball Assembly (M5) | 1 |
| 436 | 107680 | S | Seat | 1 |
| 440 | — | BB | Body | 1 |
| 441 | 13963 | NBR | O-Ring, Valve | 1 |
| 442 | 13969 | NBR | O-Ring, By-Pass Fitting - 70D | 1 |
| 443 | 541060 | BB | Valve, Check w/O-Ring | 1 |
| 444 | 45924 | S | Spring - 85G | 1 |
| 446 | 13969 | NBR | O-Ring, Discharge Fitting - 70D | 1 |
| 455 | 45695 | BB | Fitting, By-Pass (3/8" NPTF) | 1 |
| 460 | 107681 | BB | Fitting, Discharge (3/8" NPTF) | 1 |
| 465 | 7090 | — | By-Pass Hose (15' x 3/8") 160°F | 1 |
| 466 | 7090.40 | — | By-Pass Hose w/Thermo Valve | 1 |
| 468 | 32097 | NBR | Kit, O-Ring (Incls: 415, 416, 428, 429, 430, 441, 442, 446) | 1 |
| 485 | 7140 | BB | Valve, Thermo | 1 |
| 486 | 34600 | BB | Tee, T.V. Mount | 1 |
| 487 | — | BB | Nipple, T.V. Mount | 1 |

Italics are optional items.

MATERIAL CODES (Not Part of Part Number): BB=Brass NBR=Medium Nitrile (Buna-N) PTFE=Pure Teflon® S=304SS STZP=Steel/Zinc Plated

OPERATION

A Regulating Unloader comes with each 2SF pump to provide system pressure regulation and pump protection. For suction feed consult factory.

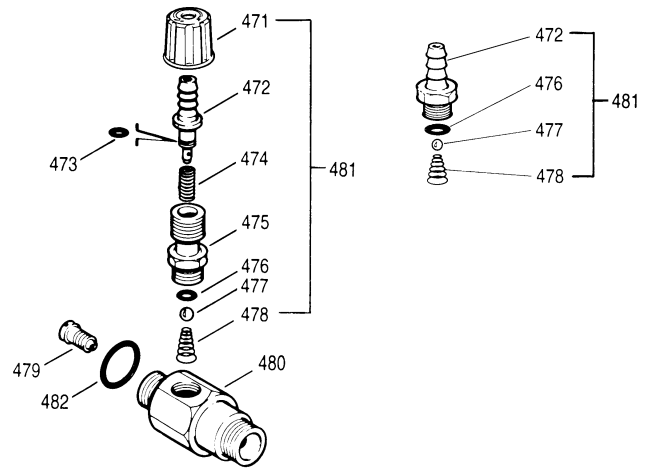
By-pass for the regulating unloader may drain to the ground, drain to a reservoir or connect to the special 1/4" by-pass port on the underside of the inlet manifold. A 3/8" flexible hose and Thermo Valve (7090.40) are recommended. **DO NOT EXCEED 6 MINUTES in BY-PASS when Thermo Valve is not installed.**

Hi-Temp Units with special Hi-Temp seals do not use the by-pass hose back to the pump inlet or the Thermo Valve. Use optional Dual Pressure Switches and Mechanical Relay in Auto Shut Off Kits 34870 and 34871.

If unit is INFREQUENTLY USED OR PERIODICALLY STORED, seals may become dry. System should be PURGED BEFORE OPERATION (system liquid must flow through the pump without discharge restriction) to assure full system pressure is reached.

CHEMICAL INJECTOR SPECIFICATIONS

| MODEL | Standard | Optional |
|----------------------|-----------------|-----------------|
| Flow | 7193 3-4 GPM | 7194 4-5 GPM |
| Nozzle Orifice | 2.1mm | 2.3mm |
| Hose Barb | 1/4" | 1/4" |
| Inlet Port | M18 x 1.0 | M18 x 1.0 |
| Discharge Port | 3/8" NPTM | 3/8" NPTM |
| Weight | 6.3 oz. | 6.3 oz. |
| Dimensions | 2 x 1 x 3" | 2 x 1 x 3" |



| ITEM | P/N | MATL | DESCRIPTION | QTY. |
|------|-------|------|---|------|
| 471 | 33949 | NY | Cap, Adjustment | 1 |
| 472 | 32941 | BB | Hose Barb | 1 |
| | 33505 | BB | Barb, Fixed | 1 |
| 473 | 33503 | NBR | O-Ring, Hose Barb | 1 |
| 474 | 33500 | S | Spring | 1 |
| 475 | 33946 | BB | Retainer, Ball Seat | 1 |
| 476 | 33504 | FPM | O-Ring, Retainer | 1 |
| 477 | 34620 | SS | Ball | 1 |
| 478 | 33501 | SS | Spring, Tapered | 1 |
| 479 | 32373 | S | Orifice, Injector (2.1mm) Standard | 1 |
| | 32374 | S | Orifice, Injector (2.3mm) | 1 |
| 480 | — | BB | Body | 1 |
| 481 | 33481 | BBNY | Barb, Assy, Adjustable (Incls: 471, 472, 473, 474, 475, 476, 477, 478) | 1 |
| — | 33480 | BB | Barb, Assy, Fixed (Incls: 472, 476, 477, 478) | 1 |
| 482 | 13969 | NBR | O-Ring, Body - 70D | 1 |

Italics are optional items.

MATERIAL CODES (Not Part of Part Number): BB=Brass FPM=Fluorocarbon (Viton®) NBR=Medium Nitrile (Buna-N) NY=Nylon S=304SS SS=316SS

CHEMICAL INJECTOR PERFORMANCE CHART Optional Special Ported Chemical Injector for Unloader Mounting

| Standard Pump Model | Injector Orifice Size | Lo-Pressure Nozzle Rating (Maximum Downstream) (Press for Injector) | Max. Chem. Draw (0 PSI) (Downstream) | Hi-Press Nozzle "Deduction" (Press. drop across Inj.) |
|---------------------|-----------------------|---|--------------------------------------|---|
| 2SF20 | 2.1 mm (7193) | 100 PSI | 50 oz/min | 100 PSI |
| 2SF22 | 2.1 mm (7193) | 75 PSI | 50 oz/min | 100 PSI |
| 2SF29, 2SF30 | 2.1 mm (7193) | 225 PSI | 50 oz/min | 150 PSI |
| 2SF35 | 2.3 mm (7194) | 150 PSI | 50 oz/min | 150 PSI |

Optimum performance of chemical injector occurs with a **35 ft. high pressure hose** and a minimum 3/8" I.D. The type of hose, extended lengths, reduced I.D. and fittings may create **back pressures** in excess of the low pressure nozzle rating and **prevent the injector** from drawing chemical. **Deduct hose friction loss from above low PSI Nozzle. Contact factory for assistance with other options.** Refer to Hose Friction Loss Chart in the Service Manual for pressure loss with longer hose.

An optional, **specially ported chemical injector** may be mounted directly to the discharge of the unloader. Remove o-ring, check valve and spring from discharge fitting of unloader; insert into injector and thread into unloader discharge port. **Discard o-ring and discharge fitting.** Refer to the performance chart to determine the orifice size best suited to the system flow. **Chemical draw occurs under low pressure.** Select the Change Over Nozzle (32149), Adjustable Nozzle (32151), or Vari-Nozzle (7930-7980) to permit the adjustment from low to high pressure.

For optimum performance when using a chemical injector, use a **single wire braid hose** on the discharge line. Too flexible a hose will prevent the unloader from receiving the full pressure signal to activate the by-pass mode.

For correct nozzle selection, **read system pressure at the pump. DO NOT READ SYSTEM PRESSURE AT THE HIGH PRESSURE GUN.** Incorrect pressure reading may result in: pump operation at excessive pressures, inconsistent chemical draw, or possible damage to the pump or unloader.

MOTOR SPECIFICATIONS

Model 8050

| | |
|---------------------|----------------|
| Horsepower | 1.5 |
| Shaft Diameter..... | 5/8" |
| Max. Volts..... | 115/230 |
| FULL LOAD AMPS..... | 12.1 |
| RPM..... | 3450 |
| Weight..... | 32.1 lbs. |
| Phase..... | Single |
| Frame Size..... | 56-C TEFC |
| Service Factor..... | 1.15 |

Model 8052

| | |
|---------------------|----------------|
| Horsepower | 2.0 |
| Shaft Diameter..... | 5/8" |
| Max. Volts..... | 115/230 |
| FULL LOAD AMPS..... | 17.0/9.2-8.5 |
| RPM..... | 3450 |
| Weight..... | 32.5 lbs. |
| Phase..... | Single |
| Frame Size..... | 56-C TEFC |
| Hertz..... | 60 |
| Service Factor..... | 1.15 |

Model 8055

| | |
|---------------------|----------------|
| Horsepower | 3.0 |
| Shaft Diameter..... | ● 3/4" |
| Max. Volts..... | 208/230 |
| FULL LOAD AMPS..... | 15.2/13.6 |
| RPM..... | 3450 |
| Weight..... | 46.3 lbs. |
| Phase..... | Single |
| Frame Size..... | 56-C TEFC |
| Service Factor..... | 1.15 |

Model 8057

| | |
|---------------------|----------------|
| Horsepower | 5.0 |
| Shaft Diameter..... | ● 3/4" |
| Max. Volts..... | 230 |
| FULL LOAD AMPS..... | 22.0 |
| RPM..... | 3450 |
| Weight..... | 40 lbs. |
| Phase..... | Single |
| Frame Size..... | 56-C OPEN DRIP |
| Service Factor..... | 1.15 |

*** Model 8060**

| | |
|---------------------|----------------|
| Horsepower | 1.5 |
| Shaft Diameter..... | 5/8" |
| Max. Volts..... | 115/230 |
| FULL LOAD AMPS..... | 14.0/7.0 |
| RPM..... | 1725 |
| Weight..... | 40 lbs. |
| Phase..... | Single |
| Frame Size..... | 56-C TEFC |
| Service Factor..... | 1.2 |

*** Model 8062**

| | |
|---------------------|----------------|
| Horsepower | 2.0 |
| Shaft Diameter..... | 5/8" |
| Max. Volts..... | 115/230 |
| FULL LOAD AMPS..... | 17.0/8.5 |
| RPM..... | 1725 |
| Weight..... | 43.7 lbs. |
| Phase..... | Single |
| Frame Size..... | 56-C TEFC |
| Service Factor..... | 1.15 |

Common Motor Specifications

| | |
|-------------------------------------|---------|
| Max. Operating Temp..... | 104°F |
| Capacitor Start | Yes |
| Thermal Overload-Manual Reset | Yes |
| U.L. Construction Reference | |
| (8050,8055)..... | E49747 |
| (8052, 8057, 8060, 8062) | E44549 |
| U.L. Insulation Reference (All) ... | E37878 |
| CSA Reference | |
| (8050) | LR45148 |
| (8052, 8057, 8060, 8062)..... | LR4642 |
| (8055)..... | LR2025 |

Note: Motor Start-Up AMPS may vary, then settle within FULL LOAD AMPS rating after initial run in time.

★ ★ Before mounting pump on motor, apply P.N. 6106 Antiseize Lubricant to pump shaft.

★ ★ Refer to Tech Bulletin #55 for instructions on removing pump from gas engine or electric motor.

Add .50 for 50 Hz (1450 or 2850 RPM)

● Use 3/4" shaft size motor with GES Pumps.

* Use with ELS models or to reduce flow by 50% on standard models.

* Use with ELS models or to reduce flow by 50% on standard models.

For warranty consideration contact CAT PUMPS for the local **Authorized Service Center**. If you are uncertain as to the cause of failure (Pump or Motor), secure **Returned Goods Authorization number** and return complete assembly **PREPAID** to CAT PUMPS for evaluation.

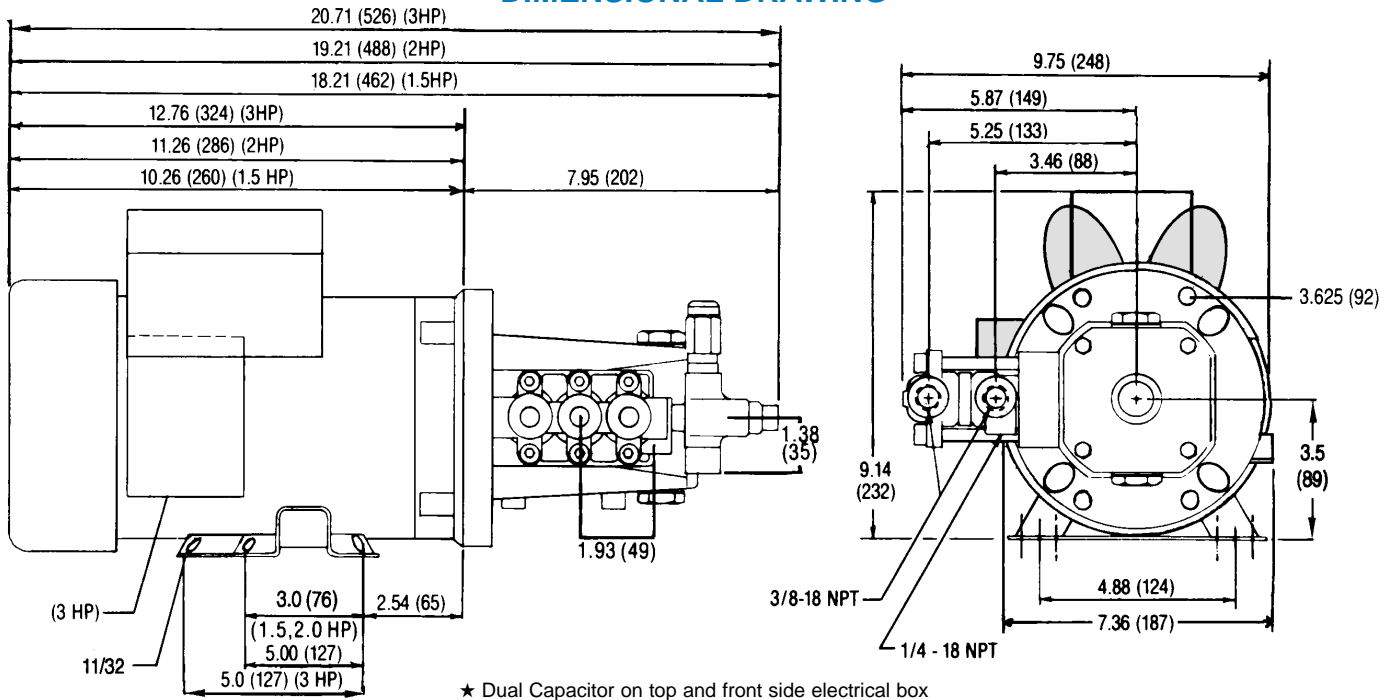
HORSEPOWER REQUIREMENTS

| FLOW | | PRESSURE | | | | | PUMP RPM |
|----------|------------|----------|----------|----------|----------|----------|----------|
| | | PSI 700 | PSI 1000 | PSI 1200 | PSI 1500 | PSI 2000 | |
| U.S. GPM | Metric L/M | BAR 50 | BAR 70 | BAR 85 | BAR 105 | BAR 140 | |
| 1.0 | 3.8 | .44 | .69 | .82 | 1.0 | 1.4 | 3450 |
| 2.2 | 8.3 | 1.1 | 1.5 | 1.8 | 2.3 | 3.0 | 3450 |
| 2.85 | 10.8 | 1.4 | 2.0 | 2.3 | 2.9 | N/A | 1725 |
| 3.0 | 11.4 | 1.4 | 2.1 | 2.5 | 3.1 | 4.2 | 3450 |
| 3.5 | 13.2 | 1.7 | 2.4 | 2.9 | 3.6 | N/A | 3450 |

DETERMINING THE REQUIRED H.P.

$$\frac{\text{GPM} \times \text{PSI}}{1460} = \text{Electric Brake H.P. Required}$$

DIMENSIONAL DRAWING



Products described hereon are covered by one or more of the following U.S. patents 3558244, 3652188, 3809508, 3920356, 3930756 and 5035580

Oct 2000 9016

World Headquarters
CAT PUMPS
 1681 - 94th Lane N.E. Minneapolis, MN 55449-4324
 Phone (763) 780-5440 — FAX (763) 780-2958
 e-mail: sales@catpumps.com
 www.catpumps.com



"The World's Most Dependable Pumps"

CAT PUMPS (U.K.) LTD.
 1 Fleet Business Park, Sandy Lane, Church Crookham, Fleet
 Hampshire GU13 0BF, England
 Phone Fleet 44 1252-622031 — Fax 44 1252-626655

N.V. CAT PUMPS INTERNATIONAL S.A.
 Heiveldekens 6A, 2550 Kontich, Belgium
 Phone 32-3-450.71.50 — Fax 32-3-450.71.51
 e-mail: cpi@catpumps.be www.catpumps.be

CAT PUMPS DEUTSCHLAND GmbH
 Buchwiese 2, D-65510 Idstein, Germany
 Phone 49 6126-93030 — Fax 49 6126-930333
 e-mail: catpumps@t-online.de www.catpumps.de

International Inquiries
 FAX (763) 785-4329
 e-mail: intlsales@catpumps.com