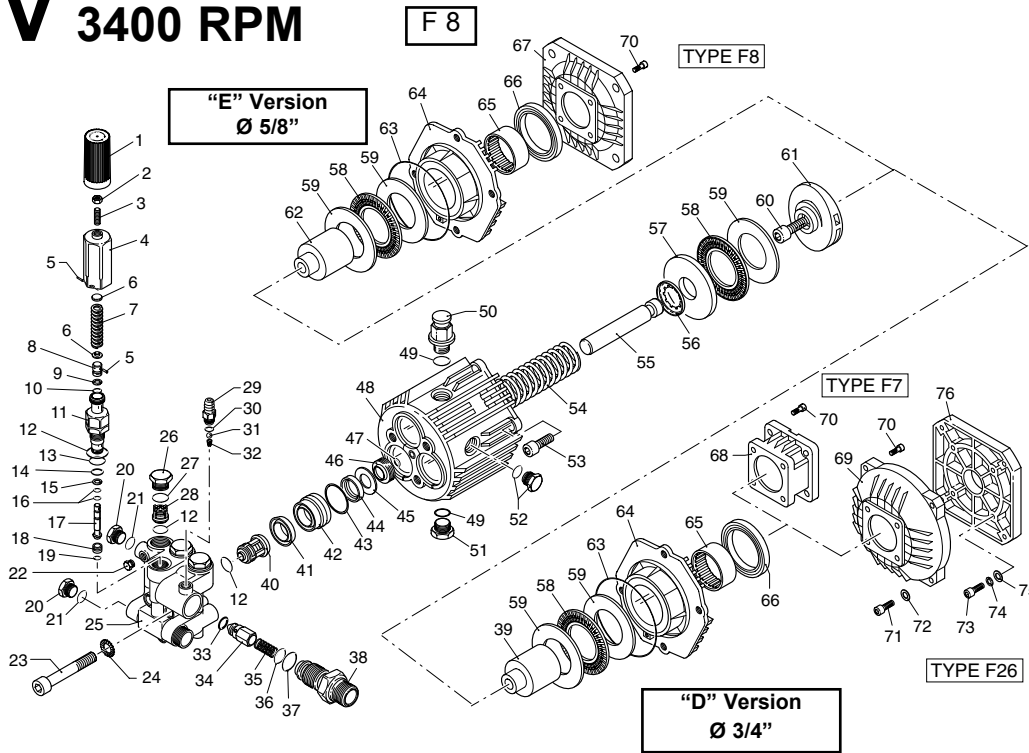


SJV 3400 RPM

SJV 2 G25 D SJV 2.5G25 D SJV 3G25 D



PS 00005-DF

Pos	Code	Description	Qty	Pos	Code	Description	Qty	Pos	Code	Description	Qty
1	1322520	Knob	1	32	1560520	Spring	1	64	1980040	Flange	1
2	1980300	Nut	1	33	1460430	O-Ring	1	65	1980230	Roller Bearing	1
3	1540560	Grub Screw	1	34	1540170	Check Valve	1	66	480671	Oil seal	1
4	1980390	Handle Insert	1	35	1080091	Spring	1	67	1320060	El. Motor flange NEMA - 56C	1
5	1080070	Pin	2	36	394280	O-Ring	1	68	1780580	Gas Engine Flange	1
6	1980220	Spring Plate	2	37	1200690	O-Ring	1	69	1320030	Motor Flange	1
7	1271070	Spring	1	38	1270140	Detergent Injector	1	70	1200430	Screw	4
8	1080041	Upper Piston	1	39	1980100	Hollow Shaft Ø 3/4"	1	71	651000	Screw	4
9	1080401	Back-up Ring	1	40	1989050	Valve w/ Support Ring	3	72	650530	Lockwasher	4
10	1080250	O-Ring	1	41	1342761	Gasket	3	73	621710	Screw	4
11	1980210	Piston Guide	1	42	1980180	Piston Guide	3	74	1322640	Washer	4
12	880830	O-Ring	7	43	770130	O-Ring	3	75	380241	Washer	4
13	740290	O-Ring	1	44	1260440	Gasket	3	76	1321520	Motor Flange QUADRA	1
14	800560	O-Ring	1	45	1980170	Ring	3				
15	1271170	Back-up Ring	1	46	1980410	Oil Seal	3				
16	1080190	O-Ring	2	47	770090	O-Ring	1				
17	1271160	Lower Piston	1	48	1980010	Housing	1				
18	1980200	Valve Seat	1	49	740290	O-Ring	2				
19	1470210	O-Ring	1	50	1980380	Oil Cap	1				
20	880581	Plug	2	51	1980740	Plug	1				
21	820510	O-Ring	2	52	1980290	Plug	1				
22	620301	Plug	1	53	180030	Screw	4				
23	1980310	Screw	3	54	1981140	Spring	3				
24	650530	Lockwasher	3	55	1980140	Piston	3				
25	1980020	Pump Head	1	56	1980150	Spring Retainer	3				
26	1260162	Valve Cap	3	57	1980130	Washer	1				
27	960160	O-Ring	3	58	1980250	Bearing	2				
28	1269050	Valve	3	59	1980240	Washer	1				
29	1560490	Hose Tail	1	60	850370	Screw	1				
30	480480	O-Ring	1	61	1980080	Wobble Plate 2 GPM	1				
31	1250280	Ball	1	61	1980070	Wobble Plate 2.5 GPM	1				
					1980060	Wobble Plate 3 GPM	1				
					62	1980110	Hollow Shaft Ø 5/8"	1			
					63	1980340	O-Ring	1			

Legend

Ø 15 mm

SJV 2 G25 D
SJV 2.5 G25 D
SJV 3 G25 D

For High Temp Use

Code	Description	Qty.
2725	Hot/Dry Ø 15 mm (180°F)	1

Repair Kits

Kit 2869		Kit 2796		Kit 2799	
Pos	Qty.	Pos	Qty.	Pos	Qty.
12	6	55	3	9	1
40	3			10	1
				12	7
				13	1
				14	1
				15	1
				16	2
				19	1
				21	2
				27	3
				30	1
				31	1
				32	1
				33	1
				36	1
				37	1
				49	3
				63	1

Kit 2858

Pos	Qty.
1-19	1