

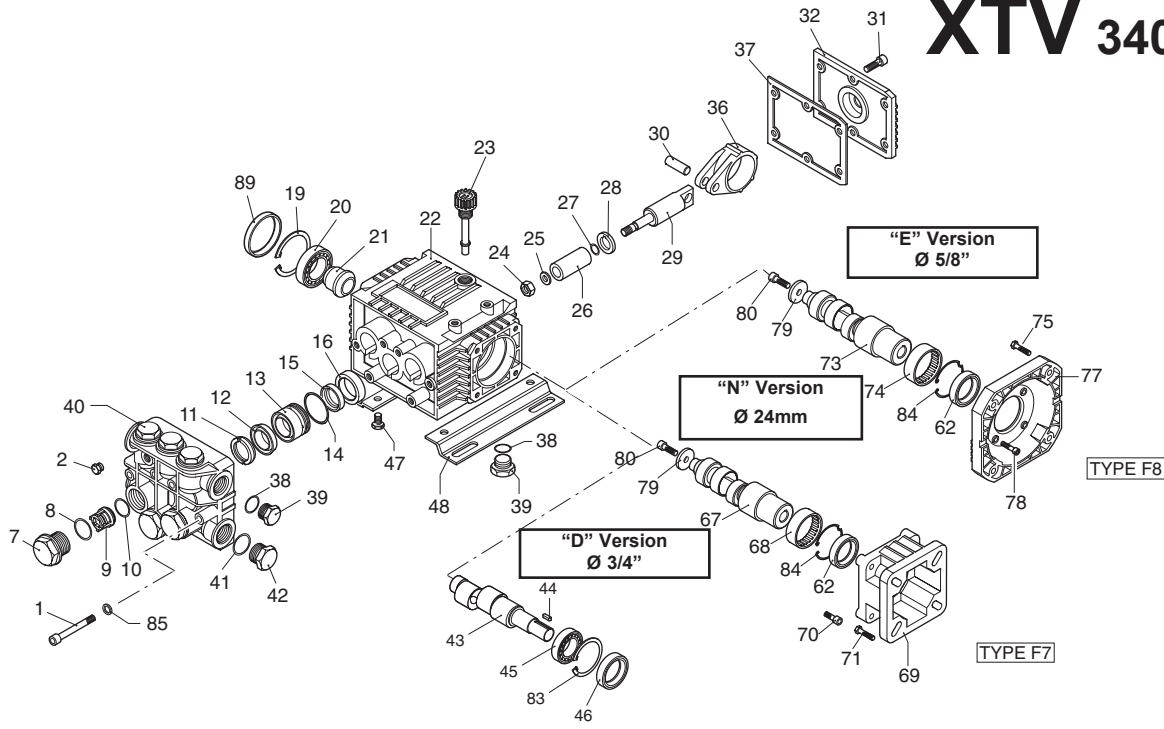
XTV 3400 RPM

XTV 2G10
XTV 2G15

XTV 2G20
XTV 2G22

XTV 3G16
XTV 3G20

XTV 3G22



Pos	Code	Description	Qty	Pos	Code	Description	Qty	Pos	Code	Description	Qty
1	680570	Screw <1800 PSI (89 in/lbs)	6	32	1321030	Cover - High w/ o 33, 34, 35	1	77	1320060	El. Motor Flange - Nema C	1
	1322730	Screw >1800 PSI (137 in/lbs)	6	1260030	Cover - Low w/ o 33, 34, 35	1	78	1200430	Screw TCEI M6x16	4	
2	620301	Plug 1/8 "G (optional)	1	1329010	Cover - High, complete	1	79	780230	Washer Ø,6.5x28x4mm	1	
7	1260162	Valve Cap (300 in/lbs)	6	1269011	Cover - Low, complete	1	80	390430	Screw TCEI M6x25mm	1	
	1260163	Valve Cap 1/8" G (optional)	-	33	1140450	O-Ring Ø 20.24x2.62mm	1	80	780060	Bolt TCEI M6x25mm	1
8	960160	O-Ring Ø 17.86x2.62mm	6	34	1260250	Oil Indicator	1	81	1321780	Screw TCEI M6x12mm	*4
9	1269050	Complete Valve	6	35	1260430	Snap Ring ZJ 25	1	82	1321420	Side Cover	*1
10	880830	O-Ring Ø 15.54x2.62mm	6	1260060	Con Rod <1800 PSI - Alum.	3	83	1260790	Circlip Ø,52mm	1	
11	1260140	Support Ring Ø15 for alum. heads	3	1320140	Con Rod >1800 PSI - Bronze	3	84	1321080	Snap Ring	1	
	1520120	Support Ring Ø15 for brass heads	3	37	1260040	Rear Gasket Cover	1	89	1266740	Oil Seal Cap	1
12	1271650	Packaging Gasket Ø 15mm	3	38	740290	O-Ring Ø 14x1.78mm	3				
13	1260151	Piston Guide Ø 15mm	3	39	1980740	Plug	2				
14	1260420	O-Ring Ø 26.70x1.78mm	3	40	1262220	Pump Head Ø 18/15mm Alum	1				
15	1260440	Packaging Seal Gasket Ø 15	3		1320022	Pump Head Ø 15mm Brass	1				
16	1260460	Oil Seal 15x24x5mm	3	41	180101	O-Ring Ø 17.5x2mm	1				
18	1320360	O-Ring Ø 47.35x1.78mm	* 1	42	820360	Plug 1/2 "G	1				
19	1260790	Circlip Ø,52mm	1	43	1321790	Solid Shaft - (C)	1				
20	1320370	Bearing 25x52x15 6205	1	44	1380520	Key A8x7x25mm	1				
21	1320330	Bushing	1	45	1320370	Bearing 25x52x15 6205	1				
22	1320010	Pump Body	1	46	1260750	Seal 25x52x7mm	1				
23	880130	Oil Cap/Dipstick	1	47	1260470	Screw TE M8x10 (optional)	4				
24	1260110	Nut M8 (106 in/lbs)	3	48	1263890	Base (optional)	2				
25	1260100	Copper Washer 8x13x0.5mm	3	62	480671	Oil Seal 40x52x7mm	1				
26	1260120	Piston Ø 15mm	3	67	1321800	Hollow Shaft Ø 3/4" - (B)	⊖ 1				
27	480480	O-Ring Ø 4.48x1.78mm	3		1321810	Hollow Shaft Ø 3/4" - (C)	● 1				
28	1260091	Washer	3	68	1321190	Bearing HK 4516	1				
29	1260070	Piston Guide	3	69	1579	Flange - Gas Type F7	1				
30	1260080	Piston Pin Ø _E 7x24mm	3	70	1200430	Screw TCEI M6x16mm	4				
31	1260760	Screw TCEI M5x20(48 in/lbs)	6	71	621710	Screw 5/16" x3/4" x24 UNF	4				
				73	1321820	Hollow Shaft Ø 5/8" - (D)	⊖ 1				
					1321830	Hollow Shaft Ø 5/8" - (E)	● 1				
				74	1321190	Bearing HK 4516	1				
				75	650610	Screw 3/8" 16 UNCx1"	4				

Legend

Ø 15 mm		XTV 2 G22	⊖ ▲
XTV 2 G10	⊖ ▼	XTV 3 G16	● ▲
XTV 2 G15	⊖ ▼	XTV 3 G20	● ▲
XTV 2 G20	⊖ ▲	XTV 3 G22	● ▲

For High Temp Use

Code	Description	Qty.
2815	Kit for up to 180P F Ø 15 mm	1

Repair Kits

Kit 2628 Piston Ø 15mm		Kit 1864 Valves		Kit 1866 Water Seals Ø 15mm	
Pos	Qty.	Pos	Qty.	Pos	Qty.
24	3	9	6	11	3
25	3	10	6	12	3
26	3			14	3
27	3			15	3
28	3				
Kit 1860 Oil Seals for E,D Versions		Kit 1872 Oil Seals for N Version			
Pos	Qty.	Pos	Qty.		
16	3	16	3		
18	1	18	1		
37	1	37	1		
62	1	46	1		